

M2I Corporation

User Define Protocol

Serial Driver

Supported version TOP Design Studio V1.4.9.0 or higher



CONTENTS

We want to thank our customers who use the Touch Operation Panel.

- 1. System configuration** [Page 2](#)
Describes connectable devices and network configurations.
- 2. External device selection** [Page 3](#)
Select a TOP model and an external device.
- 3. TOP communication setting** [Page 4](#)
Describes how to set the TOP communication.
- 4. External device setting** [Page 10](#)
Describes how to set up communication for external devices.
- 5. Script setting** [Page 11](#)
Describes how to draft a script.

1. System configuration

The system configuration of TOP and external device is as follows:

Series	CPU	Link I/F	Communication method	System setting	Cable
Supports serial connection for all devices		Serial port	RS-232C RS-422 (4wire) RS-485 (2wire)	3. TOP communication setting	User Define

■ Connection configuration

- 1:1 connection



2. External device selection

- Select a TOP model and a port, and then select an external device.

The first screenshot shows the 'Select Device' dialog box with the title 'PLC select [COM1]'. It features a 'Filter' dropdown set to '[All]', a 'Search' field, and radio buttons for 'Model' (selected) and 'Vendor'. A list of vendors is on the left, with 'M2I Corporation' selected. The 'Model' list on the right includes 'TOP Master', 'TOP Slave', and 'User Define Protocol', with 'User Define Protocol' selected. Navigation buttons 'Back', 'Next', and 'Cancel' are at the bottom.

The second screenshot shows the 'Select Device' dialog box with the title 'PLC Setting [User Define Protocol]'. It includes fields for 'Alias Name' (PLC1), 'Interface' (Serial), and 'Protocol' (User Defined), with a 'Comm Manual' button. Below is a 'Use Redundancy' section with 'Operate Condition' set to 'AND', 'Change Condition' options for 'TimeOut' (5 seconds) and 'Condition', and an 'Edit' button. A 'Primary Option' section has 'Timeout' (300 msec) and 'Send Wait' (0 msec) fields. Navigation buttons 'Back', 'OK', and 'Cancel' are at the bottom.

Settings		Contents					
TOP	Model	Check the display and process of TOP to select the touch model.					
External device	Vendor	Select the vendor of the external device to be connected to TOP. Select "M2I Corporation".					
	Model	Select the external device to be connected to the TOP. <table border="1" style="width: 100%; border-collapse: collapse;"> <thead> <tr> <th>Model</th> <th>Interface</th> <th>Protocol</th> </tr> </thead> <tbody> <tr> <td>User Define Protocol</td> <td>Serial</td> <td>User Defined</td> </tr> </tbody> </table>	Model	Interface	Protocol	User Define Protocol	Serial
Model	Interface	Protocol					
User Define Protocol	Serial	User Defined					

3. TOP communication setting

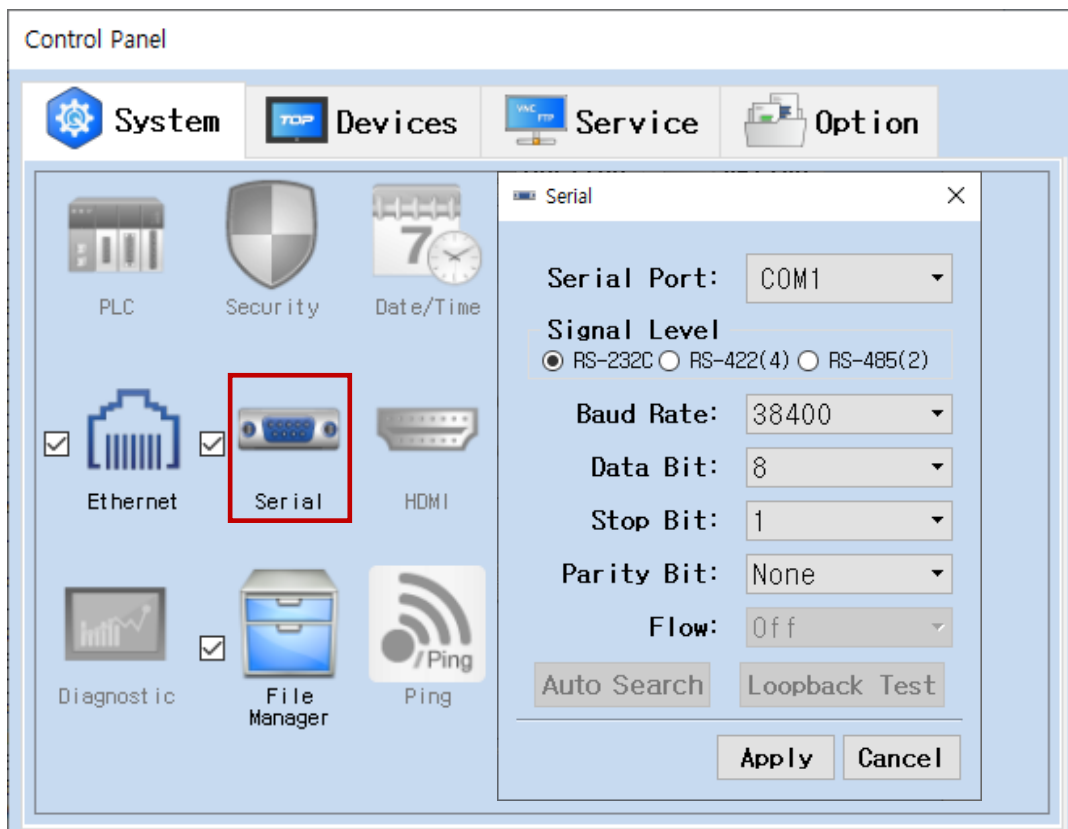
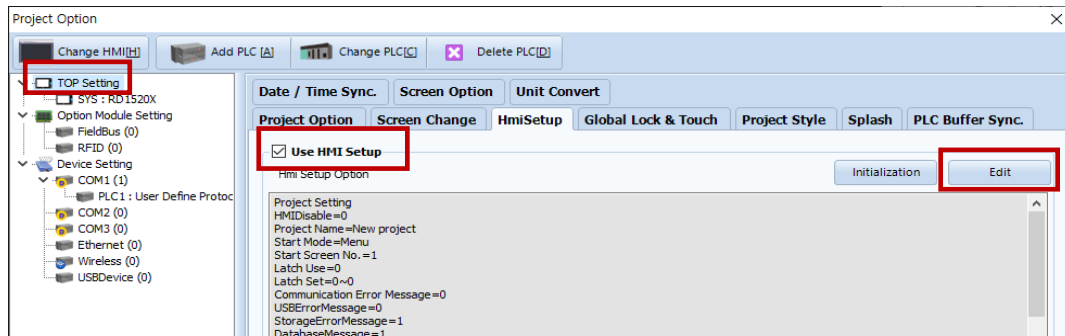
The communication can be set in TOP Design Studio or TOP main menu. The communication should be set in the same way as that of the external device.

3.1 Communication setting in TOP Design Studio

(1) Communication interface setting

■ [Project > Project Property > TOP Setting] → [HMI Setup > "Use HMI Setup" Check > Edit > Serial]

– Set the TOP communication interface in TOP Design Studio.



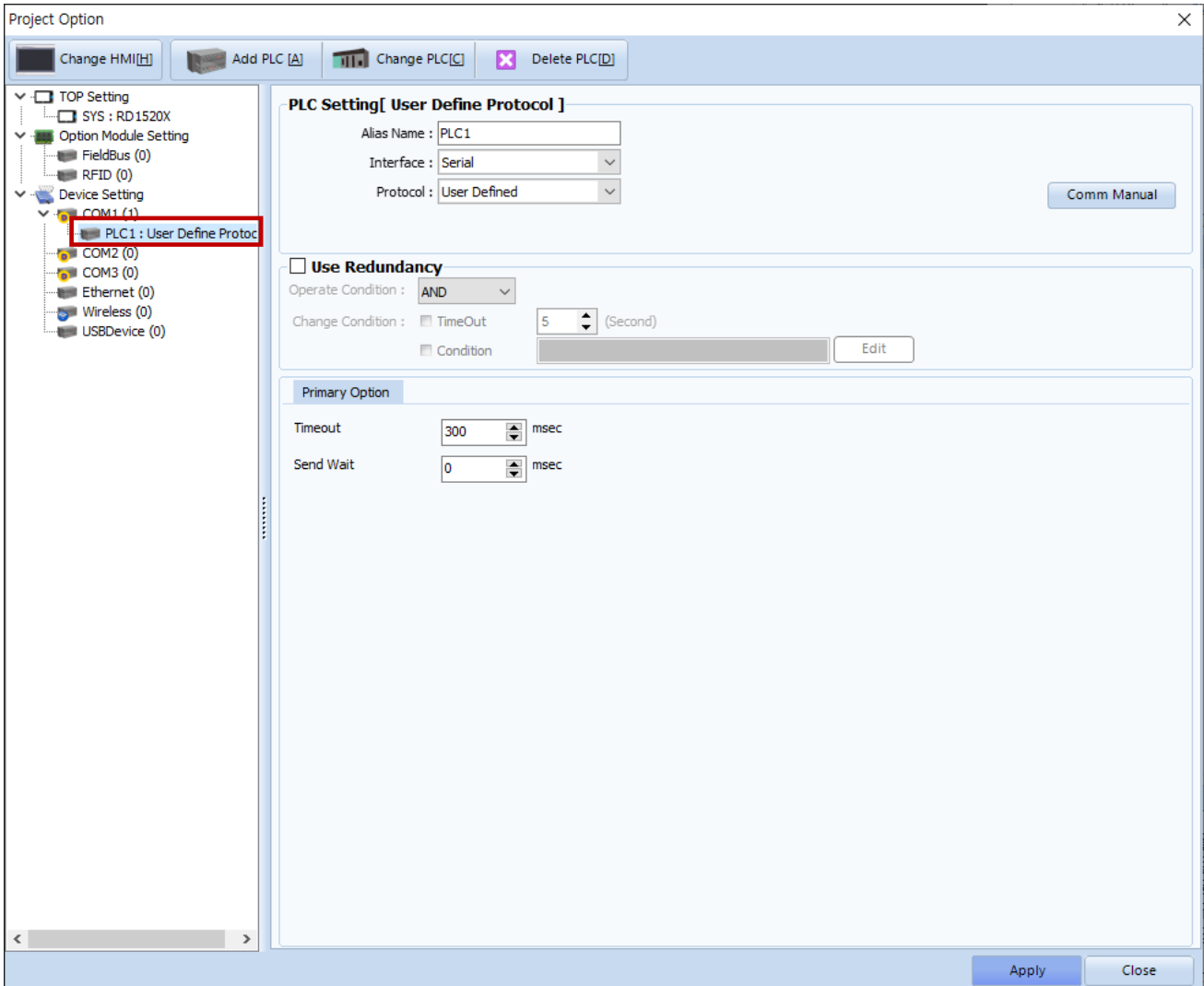
Items	TOP	External device	Remarks
Signal Level	RS-232C / RS-422 / RS-485	RS-232C / RS-422 / RS-485	
Baud Rate	38400		
Data Bit	8		
Stop Bit	1		
Parity Bit	None.		

* The above settings are examples recommended by the company.

Items	Description
Signal Level	Select the serial communication method between the TOP and an external device.
Baud Rate	Select the serial communication speed between the TOP and an external device.
Data Bit	Select the serial communication data bit between the TOP and an external device.
Stop Bit	Select the serial communication stop bit between the TOP and an external device.
Parity Bit	Select the serial communication parity bit check method between the TOP and an external device.

(2) Communication option setting

- [Project > Project Property > Device Settings > COM1 > "PLC1 : User Define Protocol"]
 – Set the options of the User Define Protocol communication driver in TOP Design Studio.



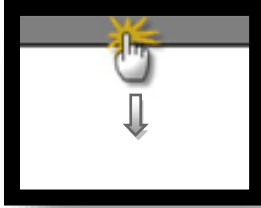
Items	Settings	Remarks
Interface	Select "Serial".	Refer to "2. External device selection" .
Protocol	Select "User Defined".	
Timeout (ms)	Set the time for the TOP to wait for a response from an external device.	*Note 1)
Send Wait (ms)	Set the waiting time between TOP's receiving a response from an external device and sending the next command request.	

***Note 1)** This corresponds to the internal response latency of the TOP; configuration of this setting is irrelevant.

3.2. Communication setting in TOP

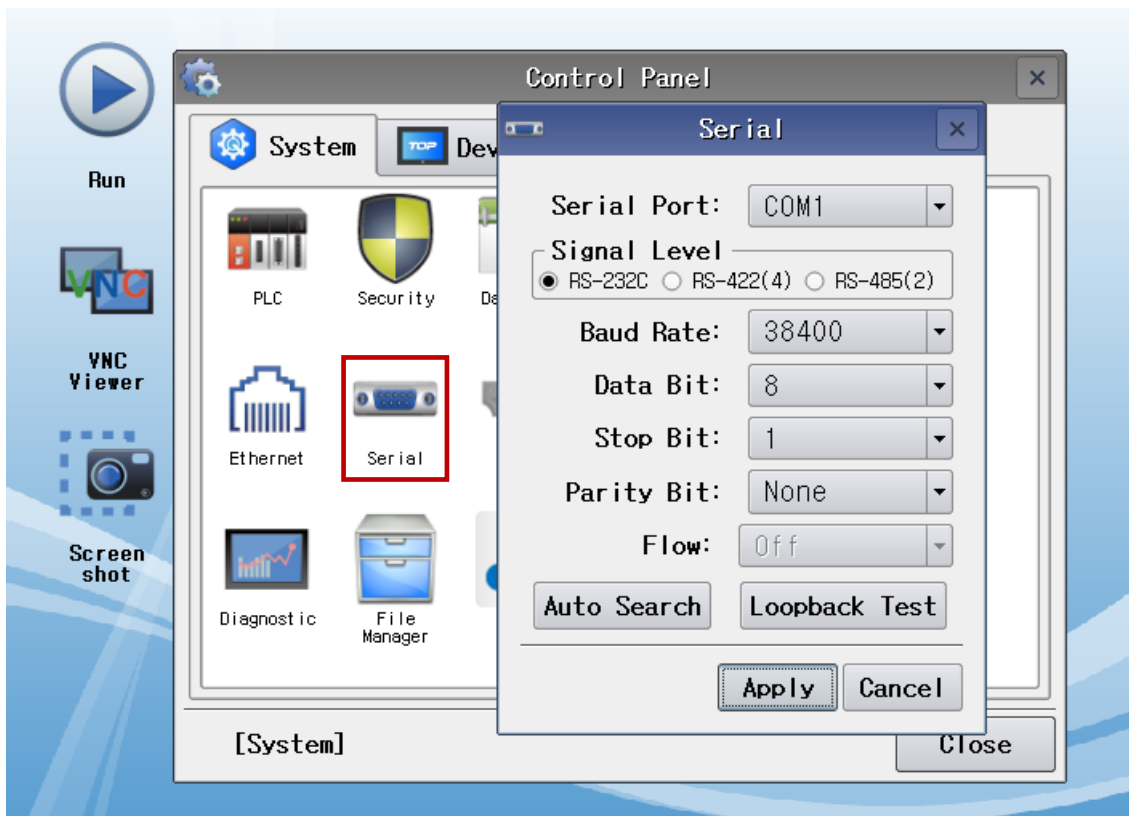
* This is a setting method when "Use HMI Setup" in the setting items in "3.1 TOP Design Studio" is not checked.

■ Touch the top of the TOP screen and drag it down. Touch "EXIT" in the pop-up window to go to the main screen.



(1) Communication interface setting

■ [Main Screen > Control Panel > Serial]



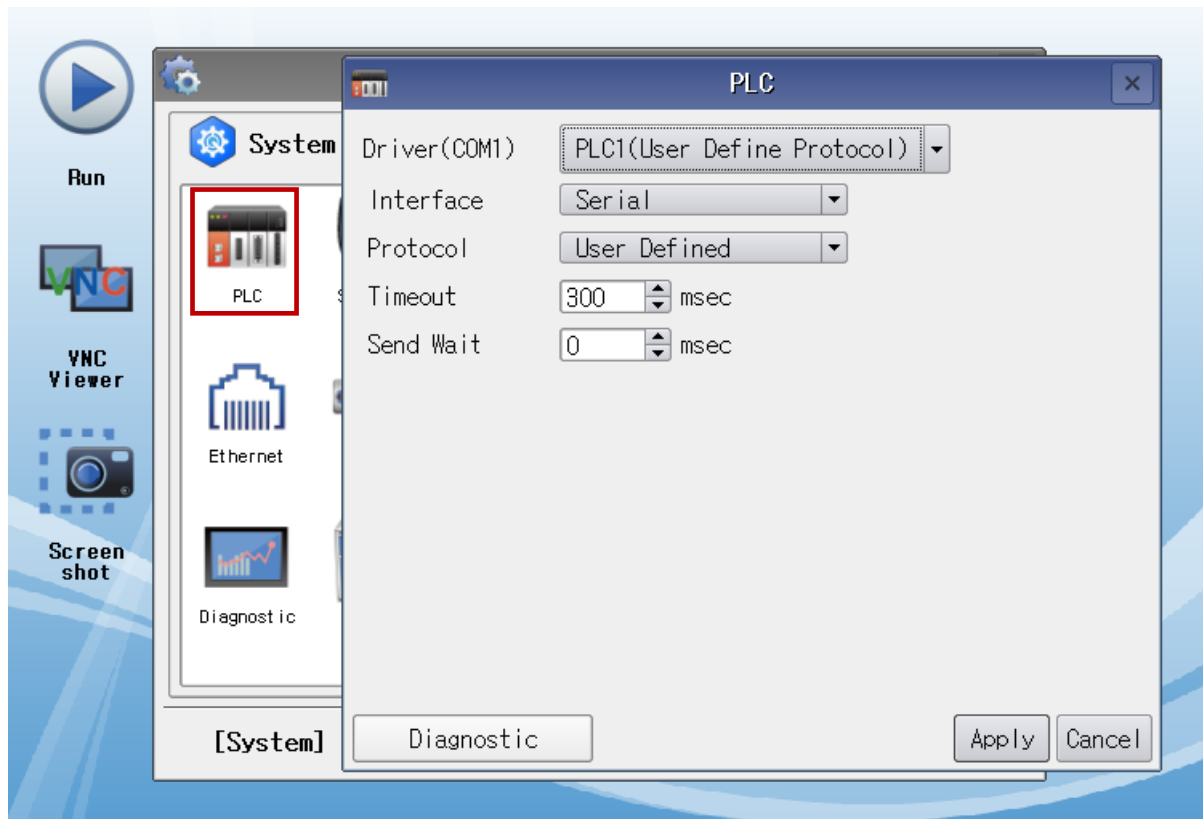
Items	TOP	External device	Remarks
Signal Level	RS-232C / RS-422 / RS-485	RS-232C / RS-422 / RS-485	
Baud Rate	38400		
Data Bit	8		
Stop Bit	1		
Parity Bit	None.		

* The above settings are examples recommended by the company.

Items	Description
Signal Level	Select the serial communication method between the TOP and an external device.
Baud Rate	Select the serial communication speed between the TOP and an external device.
Data Bit	Select the serial communication data bit between the TOP and an external device.
Stop Bit	Select the serial communication stop bit between the TOP and an external device.
Parity Bit	Select the serial communication parity bit check method between the TOP and an external device.

(2) Communication option setting

■ [Main Screen > Control Panel > PLC]



Items	Settings	Remarks
Interface	Select "Serial".	Refer to "2. External device selection" .
Protocol	Select "User Defined".	
Timeout (ms)	Set the time for the TOP to wait for a response from an external device.	<i>*Note 1)</i>
Send Wait (ms)	Set the waiting time between TOP's receiving a response from an external device and sending the next command request.	

**Note 1)* This corresponds to the internal response latency of the TOP; configuration of this setting is irrelevant.

3.3 Communication diagnostics

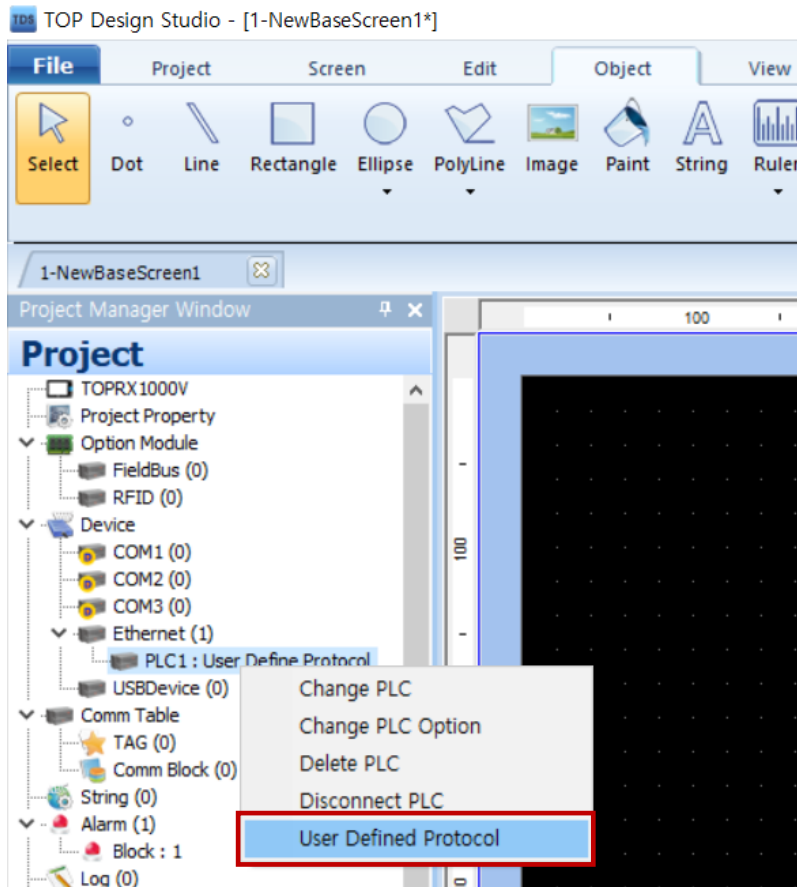
※ The following driver does not support a communication diagnostics feature for its counterpart.

4. External device setting

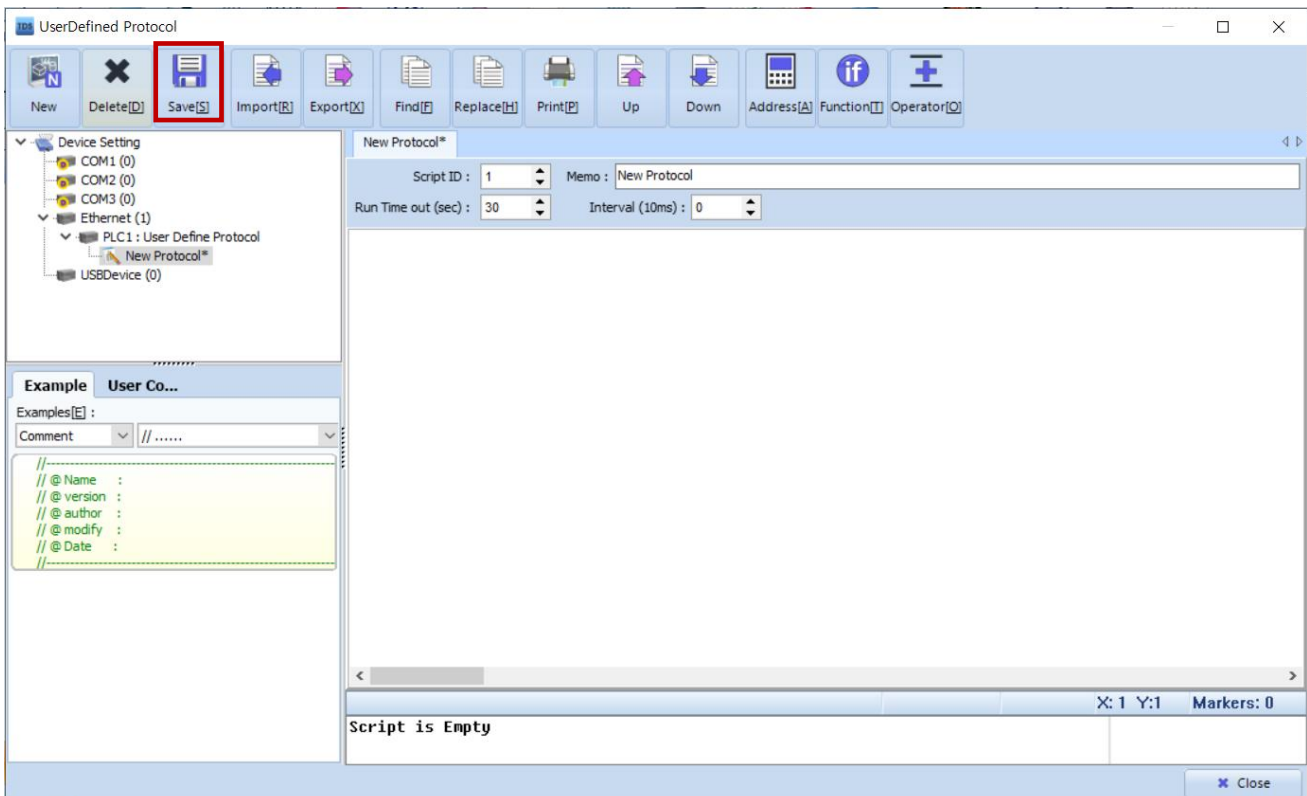
*Refer to the vendor's user manual to identically configure the communication settings of the external device to that of the TOP.

5. Script setting

Step 1. [Project > Device > COM1 > Right click "PLC1: User Define Protocol" > User Define Protocol]



Step 2. Draft and save the appropriate script for the communication.



■ User Define protocol function

Items	Description	Remarks
CommAsciiWrite(value)	Writes the ASCII data value to the external device.	
CommAsciiRead(size)	The external device reads ASCII data according to size.	
CommReset()	Resets the communication status with the external device.	
CommWait(msec)	Configures the driver's latency. (Units are in msec)	
CommErrorMsg(value)	Displays the communication error messages that occur with the external device.	
CommErrorClear()	Deletes the communication error messages that occur with the external device.	